



Itasdi

Innovative Teaching Approaches in development of Software
Designed Instrumentation and its application in real-time
systems

Practicum of measurement and data acquisition systems

LabVIEW environment

Co-funded by the
Erasmus+ Programme
of the European Union





Innovative Teaching Approaches in development of Software Designed Instrumentation and its application in real-time systems

Faculty of Technical
Sciences



Ss. Cyril and Methodius
University
Faculty of Electrical Engineering
and Information Technologies



Zagreb University of
Applied Sciences



School of Electrical
Engineering
University of Belgrade



Faculty of Physics
Warsaw University of Technology



Co-funded by the
Erasmus+ Programme
of the European Union





Innovative Teaching Approaches in development of Software Designed Instrumentation and its application in real-time systems

Itasdi

The European Commission's support for the production of this publication does not constitute an endorsement of the contents, which reflect the views only of the authors, and the Commission cannot be held responsible for any use which may be made of the information contained therein.



Itasdi

Innovative Teaching Approaches in development of Software
Designed Instrumentation and its application in real-time
systems

Praktikum iz merno-akvizicionih sistema

LabVIEW okruženje

Co-funded by the
Erasmus+ Programme
of the European Union





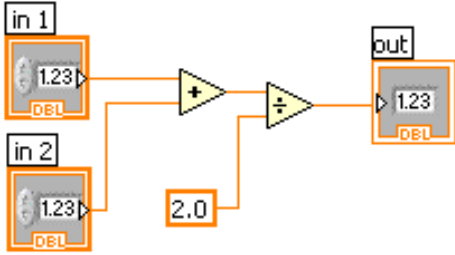
Itasdi


Innovative Teaching Approaches in development of Software Designed Instrumentation and its application in real-time systems

Šta je LabVIEW?

- **L**aboratory **V**irtual **I**nstrumentation **E**ngineering **W**orkbench
- Grafičko programsko okruženje (G programski jezik)



LabVIEW Code	Function Pseudo Code
	<pre>function average (in1, in2, out) { out = (in1 + in2)/2.0; }</pre>

- National Instruments (Austin, Texas)
- 1986. LabVIEW 1  2018. LabVIEW 2018
- **OSNOVNA** namena:

VIRTUELNA instrumentacija za **MERENJE** i **UPRAVLJANJE**



Innovative Teaching Approaches in development of Software Designed Instrumentation and its application in real-time systems

Itasdi

Zašto LabVIEW?

- Ušteda u vremenu pri dizajniranju i korekciji aplikacije
- Primer: brza izmena programa prilikom intrakardijalnog snimanja u operacionoj sali

Sonda za EKG

Sonda za pritisak



Klinički centar Srbije, kardiološka klinika
Sala za kateterizaciju



Beogradski Univerzitet, Elektrotehnički fakultet
Laboratorija za
BioMedicinsku Instrumentaciju i Tehnologije

Istraživanje: dr Miloš Kostić , dr Matija Štrbac, dr Milan Dobrić



Innovative Teaching Approaches in development of Software Designed Instrumentation and its application in real-time systems

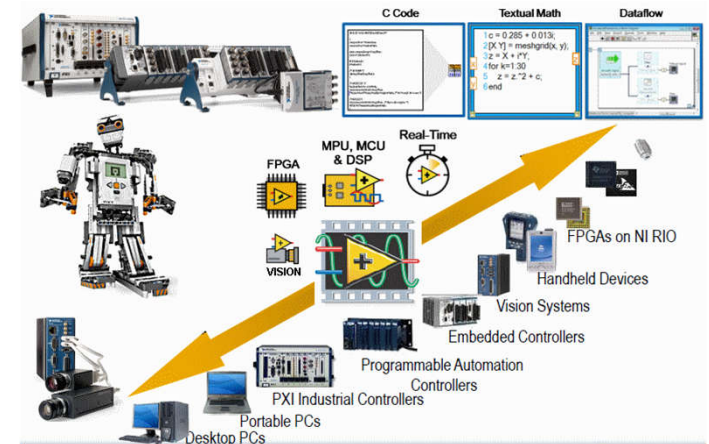
Itasdi

Zašto LabVIEW?

- Podržava hardver National Instruments-a, ali i drugih proizvođača
- **Dostupan za različite operative sisteme**
- Kompatibilan sa drugim programskim jezicima
- **Bogata biblioteka funkcija (+dodatni moduli)**



ALI...

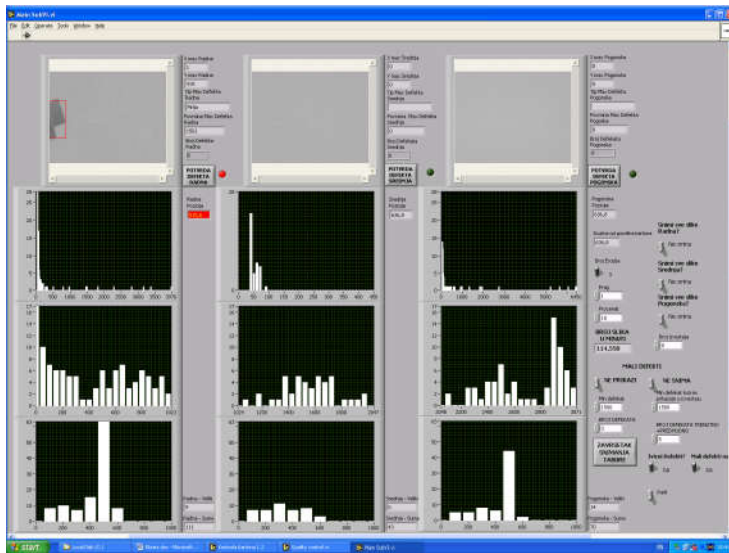




Itasdi

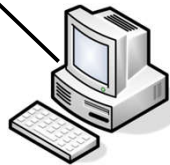
Innovative Teaching Approaches in development of Software Designed Instrumentation and its application in real-time systems

Primeri komercijalne primene

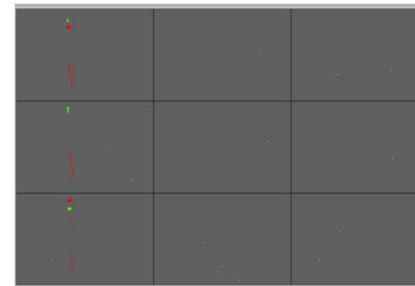


Glavni računar:

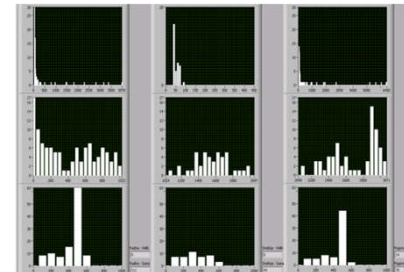
- Upravljanje sistemom za detekciju defekata.
- Pregled trenutnih defekata.
- Različite statistike pojave defekata.



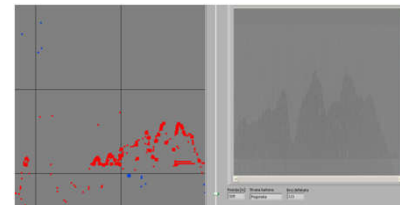
Simbolički prikaz defekata za tekuću rolnu kartona.



Statistike defekata za tekuću rolnu kartona.



Pregled defekata na formiranoj rolnoj kartona.
Off Line Režim.



- *LabVIEW*.
- Industrijske *firewire* kamere
- Standardni reflektori
- Upravljanje i pregled rezultata sa bilo koje lokacije u fabrici.

Iz doktorske disertacije Marka Barjaktarovića



Innovative Teaching Approaches in development of Software Designed Instrumentation and its application in real-time systems

Itasdi

Primeri komercijalne primene

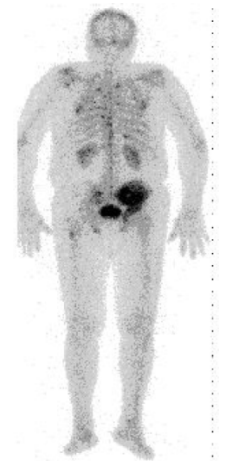
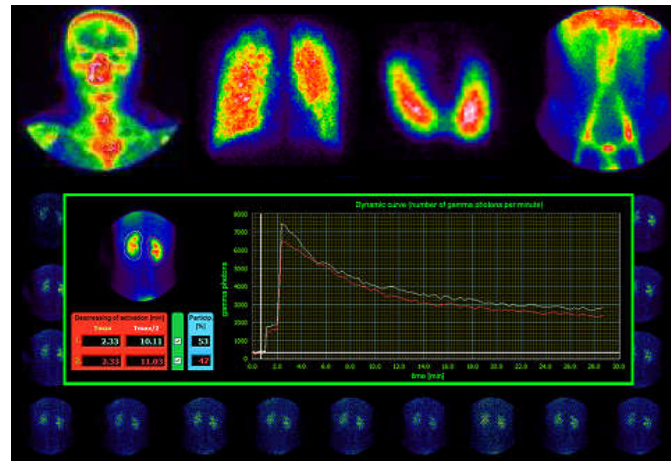
Cilj projekta: Unapređenje akvizicije, arhiviranja i obrade studija sa analognih gama kamera zamenom starih ili nefunkcionalnih računarskih sistema.

Benefit:

- Odlaganje kupovine novih skupih digitalnih gama makera i njihovih računarskih sistema
- Sprečavanje odliva medicinskog kadra u druge oblasti medicinske slike
- Naučni napredak zahvaljujući mogućnosti implementacije novih medoda u obradi slike



GammaKey sistem



Iz doktorske disertacije Milice Janković



Innovative Teaching Approaches in development of Software Designed Instrumentation and its application in real-time systems

Itasdi

Organizacija fajlova – *Project explorer*

File>>Create Project...>>Blank Project

LabVIEW fajlovi:

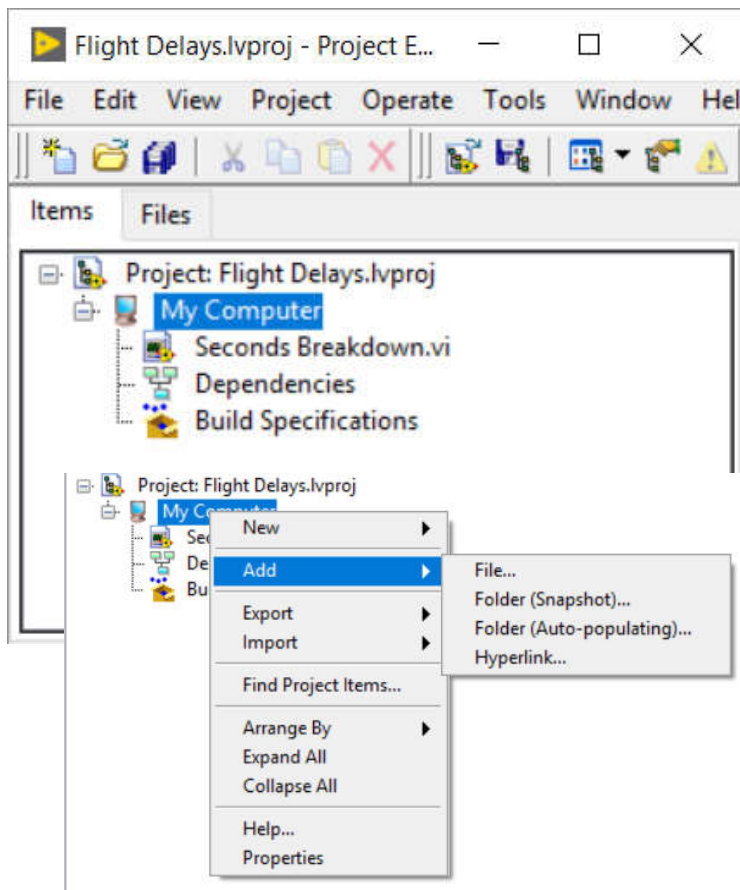
- LabVIEW projekti -> .lvproj
- Virtual Instruments (VI) -> .vi

Virtual folder (Snapshot)

nije identična organizacija kao na disku

Auto-populating folder

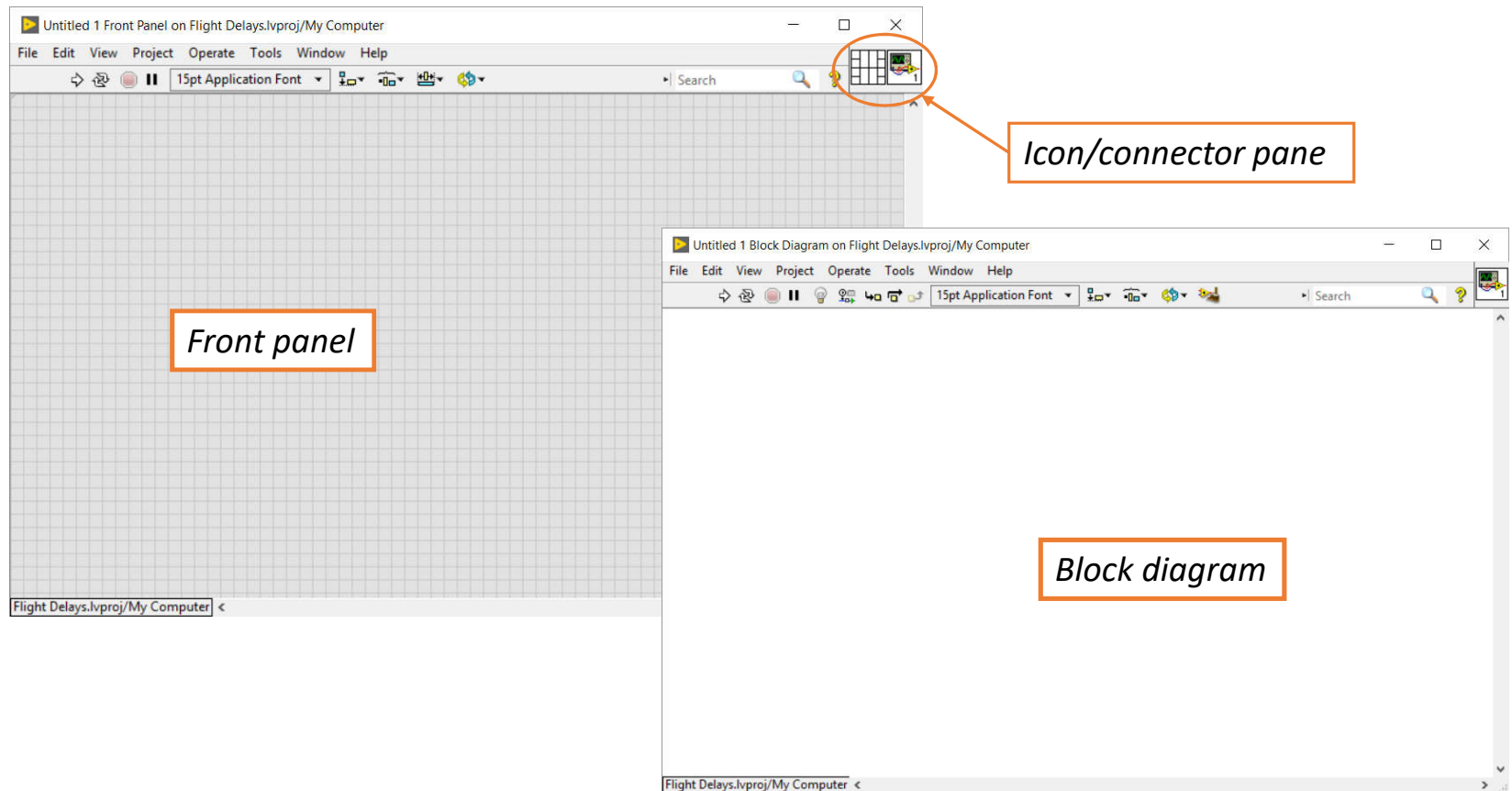
identična organizacija kao na disku





Innovative Teaching Approaches in development of Software Designed Instrumentation and its application in real-time systems

Komponente VI-a

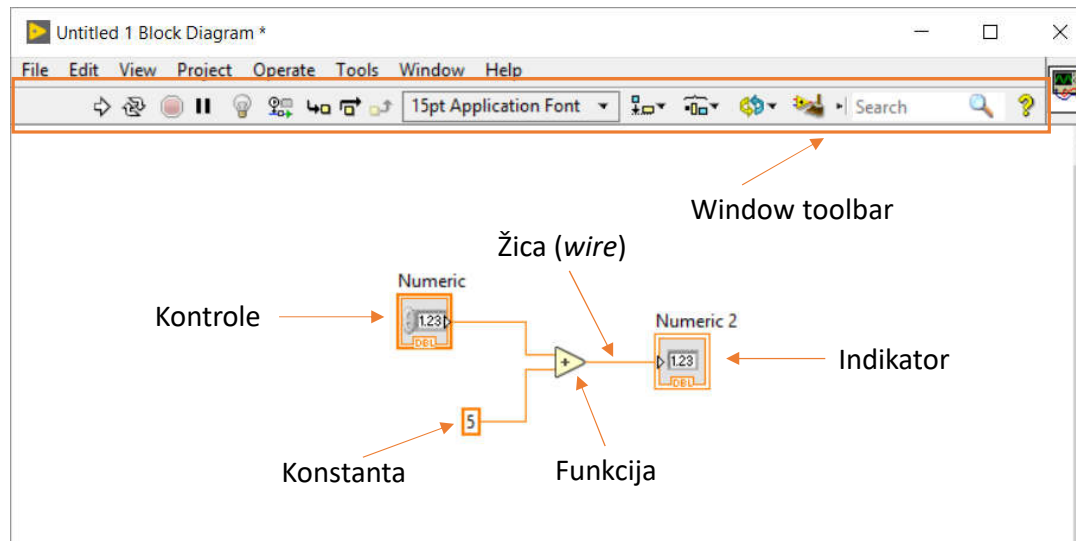


Front Panel

The image shows a screenshot of a LabVIEW Front Panel window titled "Untitled 1 Front Panel on Flight Delays.lvproj/My Computer *". The window contains several UI elements:

- Window toolbar:** Located at the top right of the window, containing search and help icons.
- Kontrolne – ulazi:** A label pointing to a "Numeric Control" on the left side of the panel.
- Indikator – izlazi:** A label pointing to a "Waveform Chart" in the center of the panel.
- Paleta kontrola i indikatora:** A callout box containing the text "View >> Controls Palette" pointing to the "Controls" palette at the bottom left.
- Različiti stilovi kontrola i indikatora:** A callout box pointing to the "Modern" style category in the "Controls" palette.
- Različiti tipovi kontrola:** A callout box pointing to a "String & Path" palette at the bottom center, which includes controls like "String Control", "String Indicator", "Combo Box", "File Path Control", and "File Path Indicator".
- Osobine kontrola:** A callout box pointing to a context menu for a "Meter" control on the right side of the panel. The menu includes options like "Visible Items", "Find Terminal", "Change to Control", "Change to Array", "Make Type Def.", "Description and Tip...", "Create", "Replace", "Data Operations", "Advanced", "Fit Control to Pane", "Scale Object with Pane", "Adapt To Source", "Representation", "Display Format...", "Add Needle", "Scale", "Text Labels", and "Properties".

Block Diagram



Paleta funkcija
View >> Functions Palette




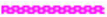
The Functions palette is open, showing a search bar and a 'Customize' button. The categories and their contents are:

- Programming**: Structures, Array, Cluster, Class, & Variant, Numeric, Boolean, String.
- Comparison**: Comparison.
- Timing**: Timing.
- File I/O**: File I/O.
- Waveform**: Waveform.
- Dialog & User Interface**: Dialog & User Interface.
- Application Control**: Application Control.
- Synchronization**: Synchronization.
- Graphics & Sound**: Graphics & Sound.
- Report Generation**: Report Generation.

Below these are several collapsed categories: Measurement I/O, Instrument I/O, Mathematics, Signal Processing, Data Communication, Connectivity, Control & Simulation, Express, Addons, Select a VI..., Real-Time, FPGA Interface, and Robotics.

 Broken wire → greška u kodu

Različitim tipovima podataka odgovaraju različite boje žice, a debljina žice odgovara dimenzijama.

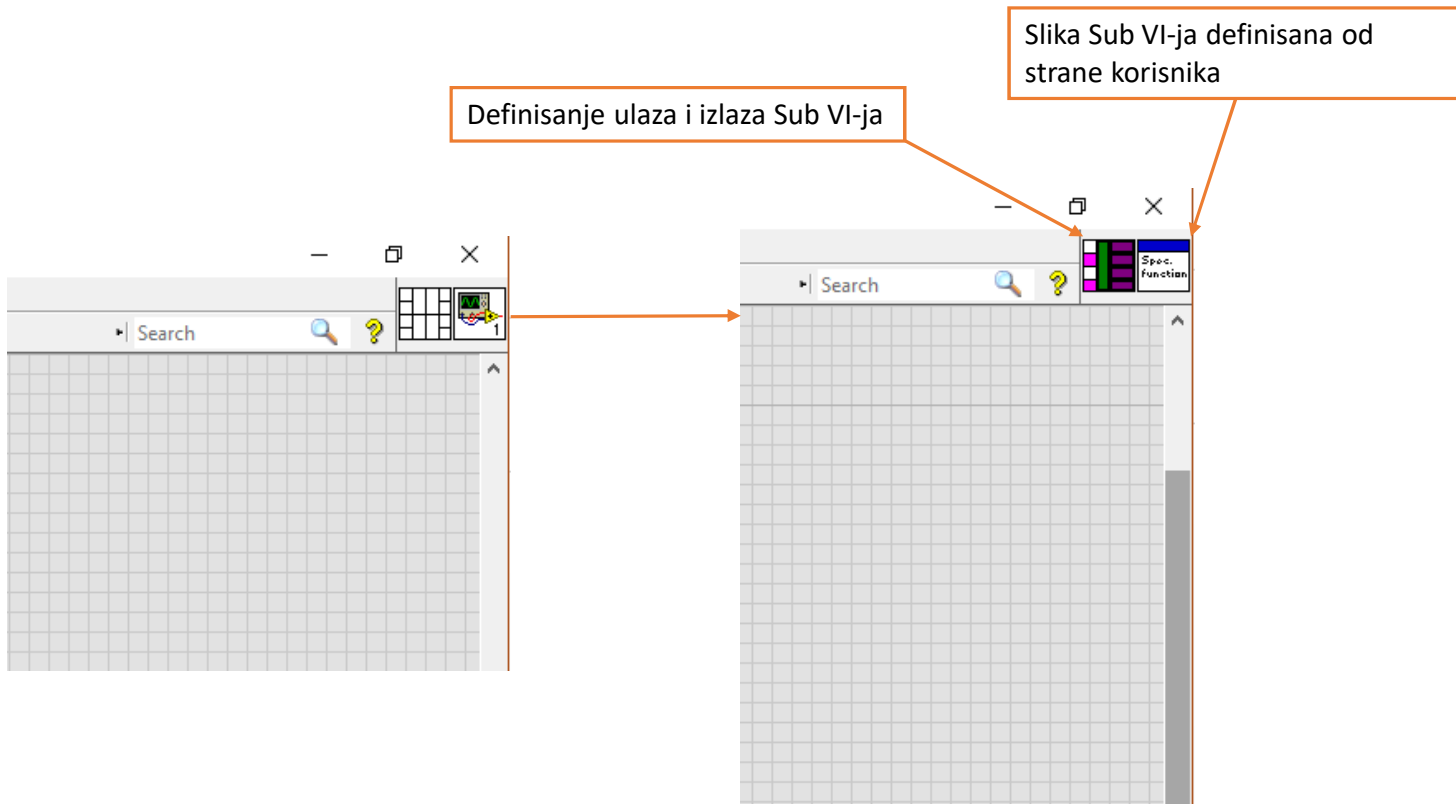
	Floating-point	Integer	String	Boolean
Scalar				
1-D Array				
2-D Array				



Itasdi

Innovative Teaching Approaches in development of Software Designed Instrumentation and its application in real-time systems

Icon/Connector pane



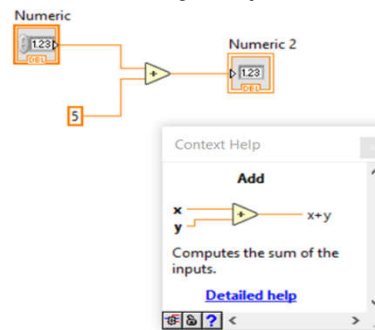


Innovative Teaching Approaches in development of Software Designed Instrumentation and its application in real-time systems

Itasdi

Pomoć

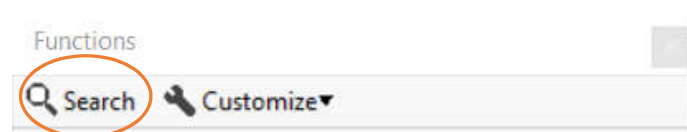
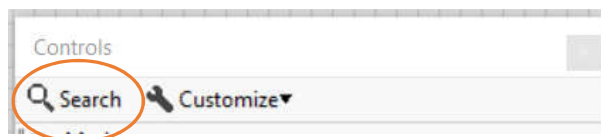
1. *Context Help* -> Pozicionirati se mišem iznad funkcije i pritisnuti *Ctrl + H*



2. *Help >> LabVIEW Help ...*

3. *Help >> Find examples... - veliki broj primera*

4. *Controls i Functions Palette -> Search*



5. *Quick Drop* – poziva se pritiskom *Ctrl + Space* (brzo pronalaženje kontrola i funkcija)

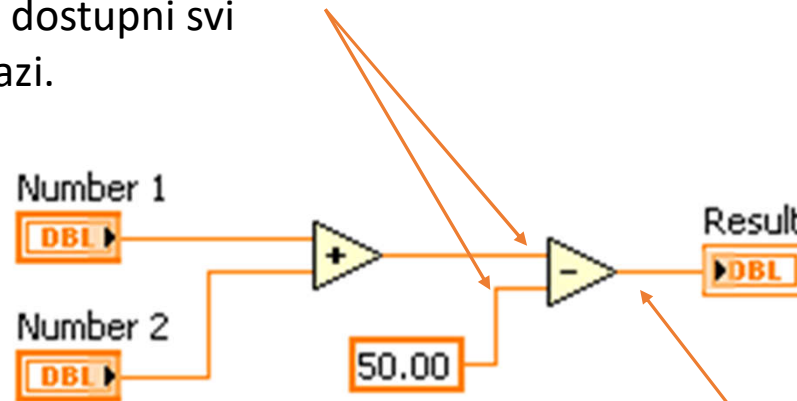


Itasdi

Innovative Teaching Approaches in development of Software Designed Instrumentation and its application in real-time systems

Dataflow programiranje

Čvor (funkcija) će se izvršiti tek kad su dostupni svi njegovi ulazi.



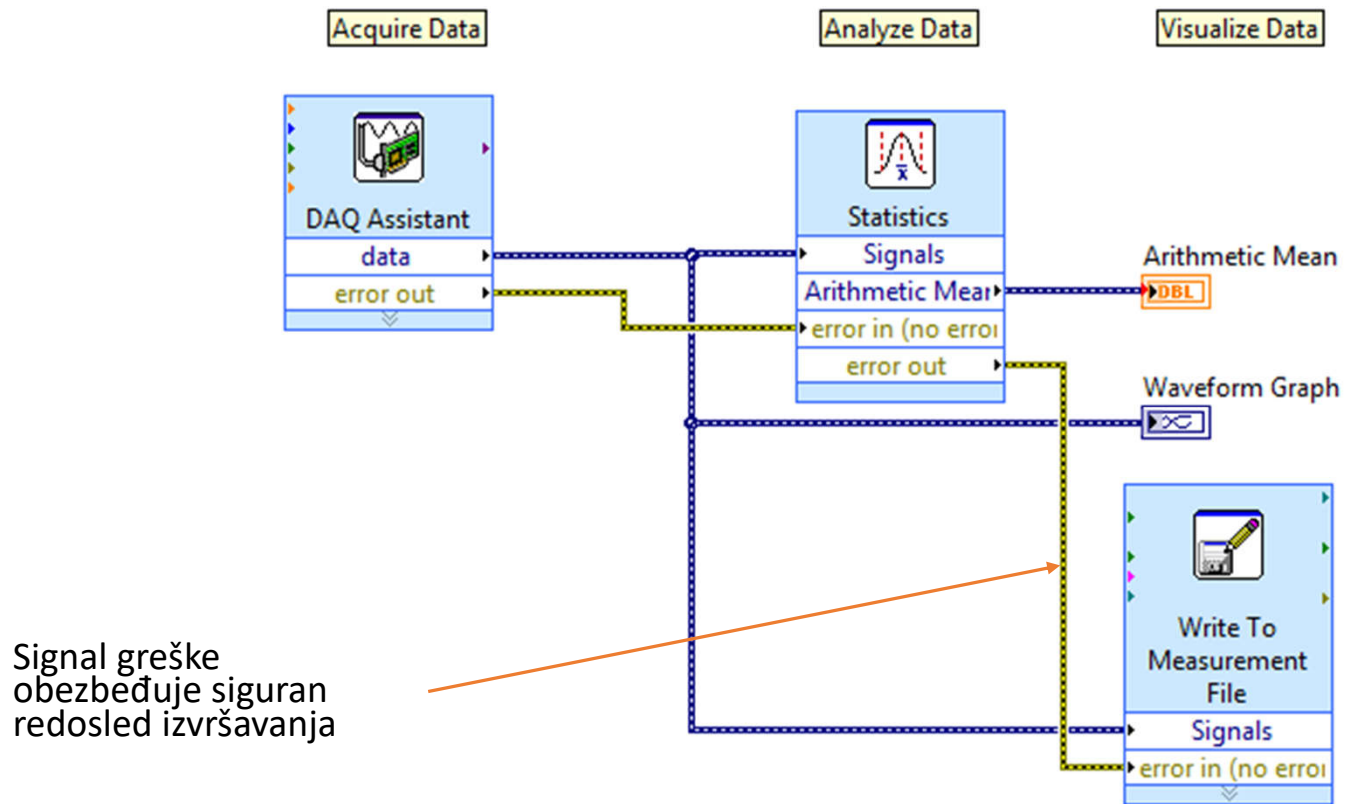
Čvor (funkcija) daje informacije terminalu tek kad je završio svoje izvršavanje.



Itasdi

Innovative Teaching Approaches in development of Software Designed Instrumentation and its application in real-time systems

Dataflow programiranje





Innovative Teaching Approaches in development of Software Designed Instrumentation and its application in real-time systems

Itasdi

Alatke

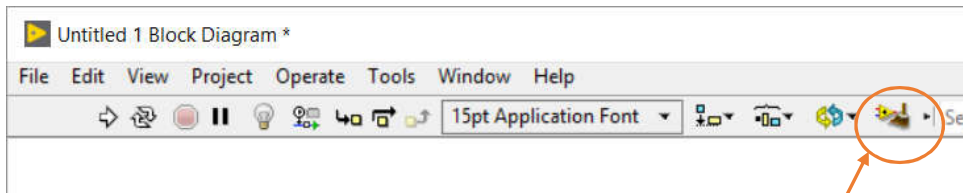
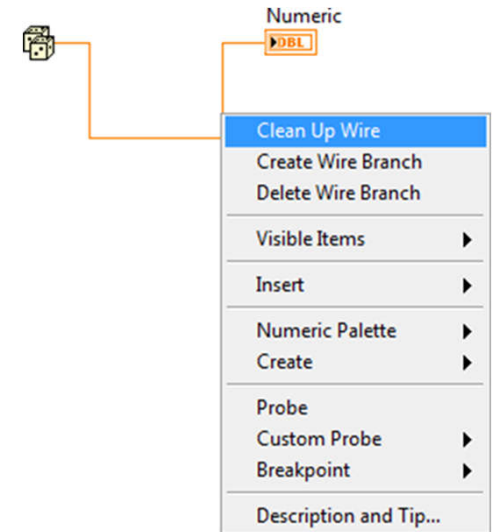
Alatka za programiranje: Programming Tool – View >> Tools Palette



Ručni izbor alatki



Automatski izbor alatki



Clean up Diagram

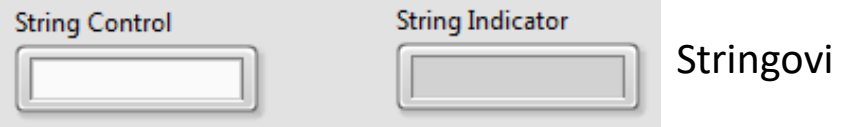
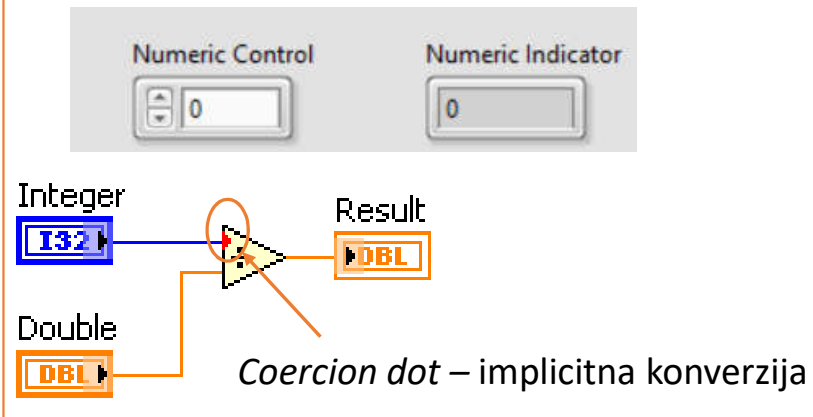


Innovative Teaching Approaches in development of Software Designed Instrumentation and its application in real-time systems

Itasdi

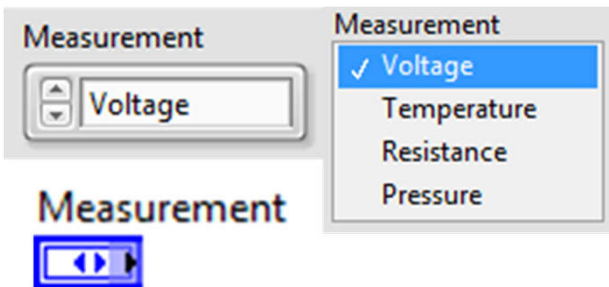
Tipovi podataka

Numerički tip podataka

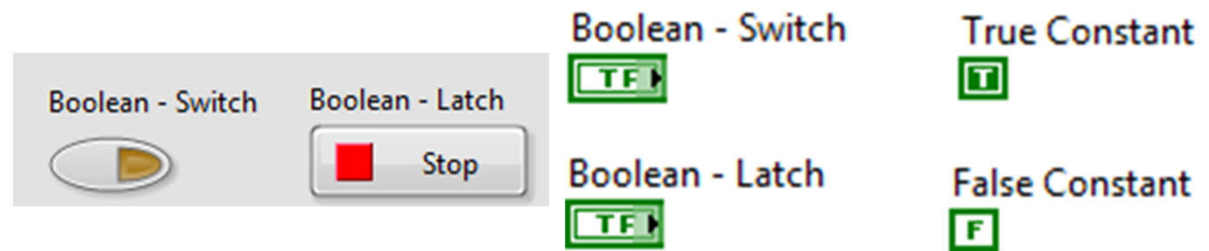


- String Control
- String Indicator
- String Control abc
- String Indicator abc
- Empty String Constant ""
- String Constant Test Operator
- Tab Constant
- End of Line Constant

Enumeratori



Boolean tip podataka





Innovative Teaching Approaches in development of Software Designed Instrumentation and its application in real-time systems

Itasdi

Debugovanje programa

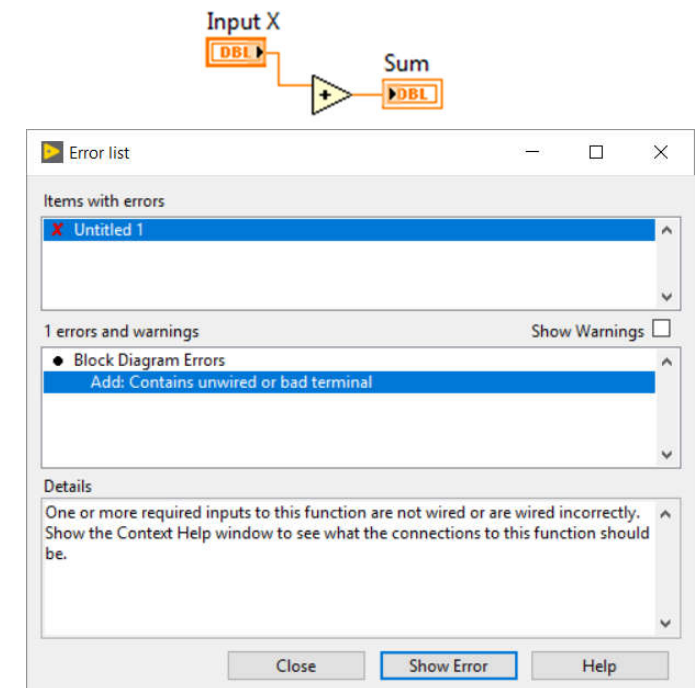
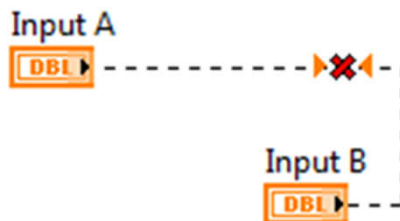


Najčešći razlozi za nemogućnost pokretanja VI-a:

- Povezivanje dva različita tipa podataka
- Funkcijama nisu povezani svi ulazi



- Povezivanje dve kontrole (ili indikatora)



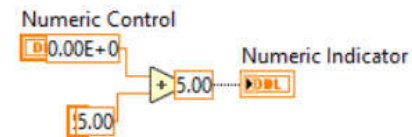
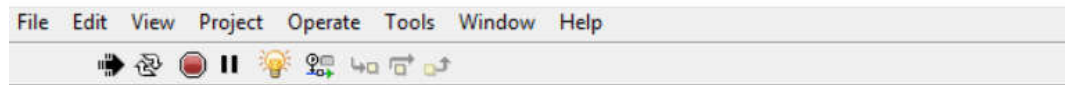


Innovative Teaching Approaches in development of Software Designed Instrumentation and its application in real-time systems

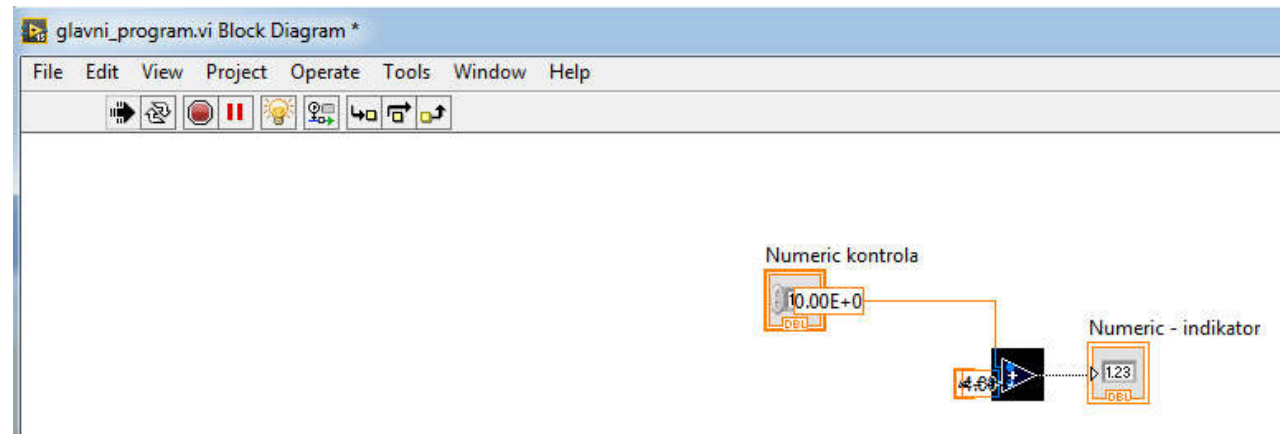
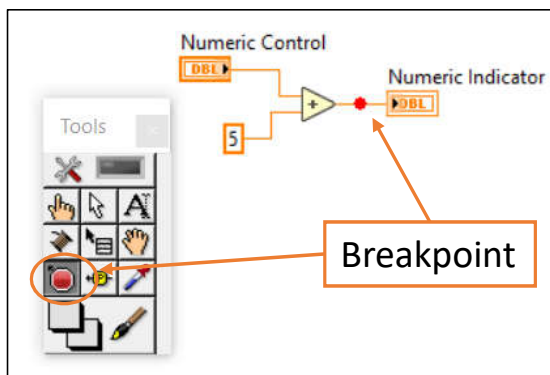
Itasdi

Debugovanje programa

1. Execution Highlighting – praćenje vrednosti u toku izvršavanja programa



2. Breakpoint





Innovative Teaching Approaches in development of Software Designed Instrumentation and its application in real-time systems

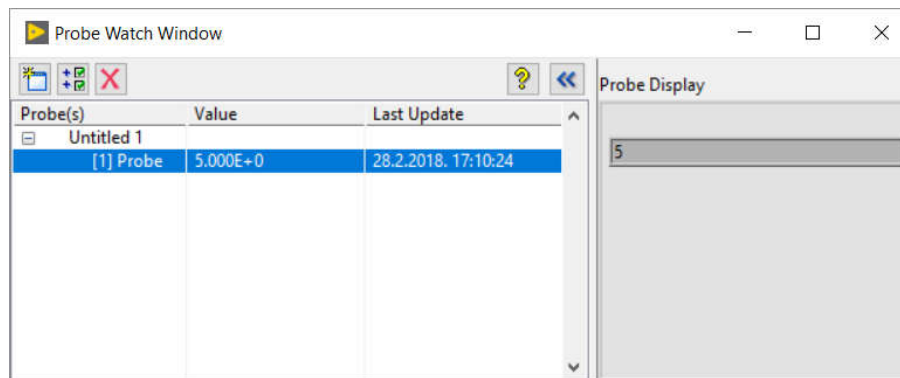
Itasdi

Debugovanje programa

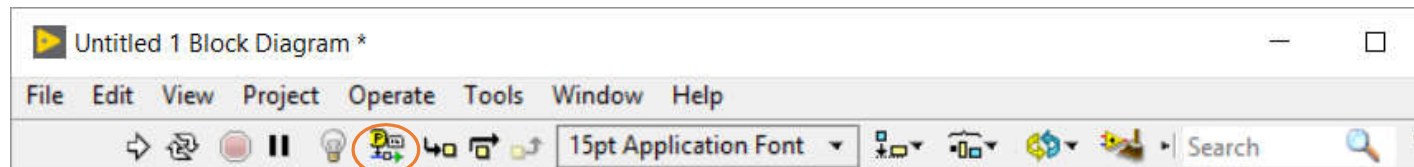
3. *Single Stepping* – debugovanje korak po korak kroz funkcije



4. *Probe*



- 5. *Retain Wire values* - ako je uključeno ostaje vrednost na “žici” nakon izvršavanja programa i može se prikazati pomoću *Probe*.





Innovative Teaching Approaches in development of Software Designed Instrumentation and its application in real-time systems

Hvala na pažnji!

Co-funded by the
Erasmus+ Programme
of the European Union

