
ITASDI PROJECT

Innovative Teaching Approaches in development of Software Designed Instrumentation and its application in real-time systems

Erasmus+ KA2 2018-1-RS01-KA203-000432

Course „Advanced LabVIEW Applications“

Laboratory no 2 - Master/Slave Design Pattern

Leader Partner: ¹Warsaw University of Technology

Authors: Dariusz Tefelski¹, Angelika Tefelska¹

Circulation: Public

Version: 02

Stage: Final

Date: 10.09.2019

Funding Disclaimer

This project has been funded with support from the European Commission. This communication reflects the views only of the authors, and the Commission cannot be held responsible for any use which may be made of the information contained therein.

1 High-energy physics experiment controller

1.1 Goal

Create an application, which simulate collecting data from the fixed-target experiment at Super Proton Synchrotron.

1.2 General requirements

- The application should be hierarchical and scalable. Remember to use subVIs.
- Use the Master/Slave Design Pattern.
- Avoid using the local, global or shared variables if it is possible.
- Close all opened references and handles.
- Application shouldn't crash. Inform the user about the errors using the error cluster or a dialog box.
- Remember to prepare well documented code. Especially remember about: labels on long wires, description showing in context help, tip strips of controls and labels of constant values.

1.3 Description

- The beam of particles is simulated as rounded Boolean indicator named *Beam*. When the application is started, the *Beam* terminal should round on the Super Proton Synchrotron (circle shown on picture). The *Beam* indicator should start rounding on BA1 position.

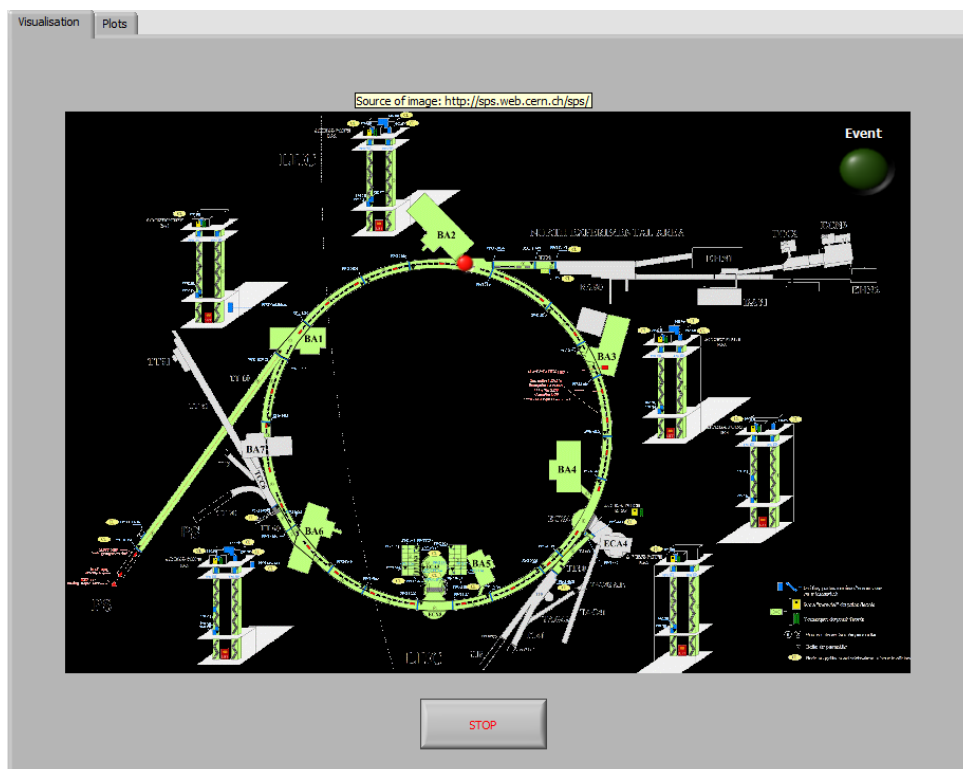


Figure 1: The first tab of *front panel*.

- When beam position is near the North Experimental Area (behind the BA2 building in the picture), the collision happens and the *Event* indicator should be turned on. The *Event* indicator should be turned off before and after collision.
- After the collision, the *Beam* indicator should still be rounding on the Super Proton Synchrotron.
- During the collision, the data from Beam Position Detectors (BPD) 1, 2 and 3 should be displayed on *Waveform Graph*. The data from BPD1 are saved in file *data1.csv*, in which first column is x position and second column is y position. After starting the application, you should read these data from file and display on *Waveform Graph* only when the collision occurred. Before and after collision, the *Waveform Graphs* should be empty. The data from BPD2 are saved in file *data2.csv* and from BPD3 in *data3.csv*.
- During the collision, the produced particles momenta should be displayed on *Waveform Graph*. The values of momentum are saved in file *data4.csv*. Before and after the collision, the *Waveform Graph* should be empty.

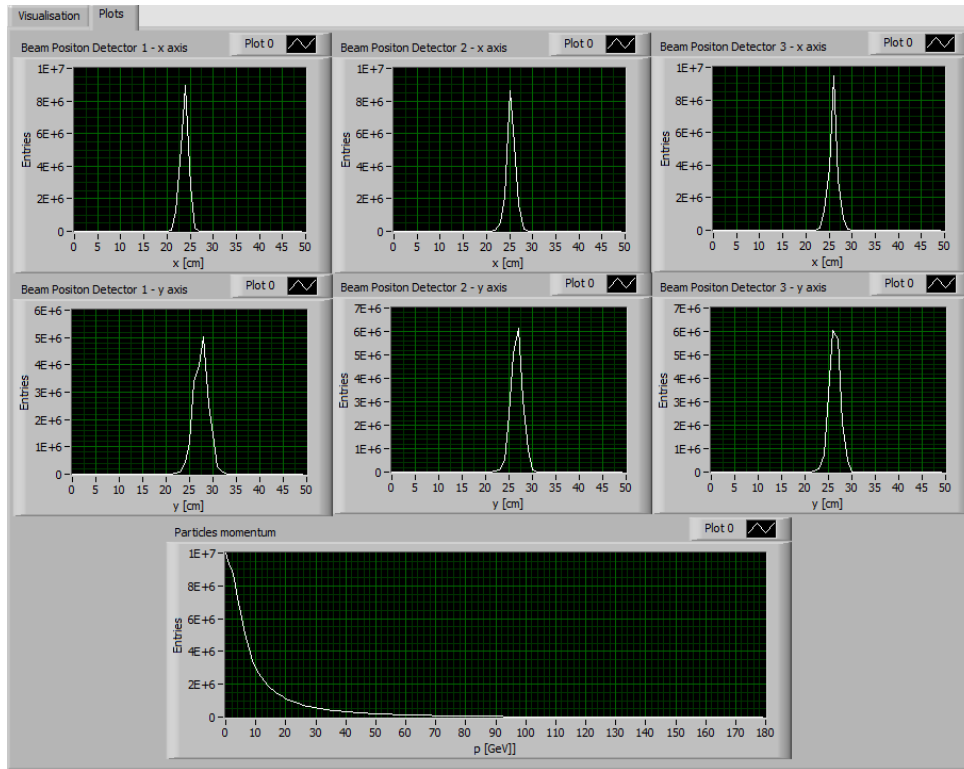


Figure 2: The second tab of *front panel*.

1.4 Realization

- Use the Master/Slave Design Pattern, which should have one master loop and 4 slave loops (one for BPD1, second for BPD2, third for BPD3 and fourth for momentum displaying).
- The notifier should be used to communicate between loops.
- The *Beam* indicator position should be changed inside the master loop. When its position is near the North Experimental Area, the proper message should be sent to all slave loops.
- The slave loops should wait for notification and when it appears, the proper data should be displayed on *Waveform Graphs*.



- Add the different delays for master and slave loops e.g. 50 ms for master loop and 300 ms for slave loops.

Please use the front panel from public folder.